

Delta Acciones

A share



December 2022

Fund type
Equities - ARG Exposed

Fund information

Investment Team Co-Heads
Damián Lorenzo
Matías Cremaschi, CFA

Portfolio Managers
Matías Cremaschi, CFA

Fund net assets
\$ 916,846,252

Fund Inception Date
Julio 2005

Subscriptions and Redemptions currency
Pesos

Redemption Payment Period
Up to 2 business days

Fund's Custodian
Banco de Valores S.A.

Management Fees
3.90% + yearly VAT

Annual fees proportional to the period of stay

Custodian Fees
0.10% + yearly VAT

Entry and Exit load
None

Minimum investment¹
\$ 1,000.00

Rating
AAC(arg)

Bloomberg Code
RJDELTA AR

ISIN Code
ARBVAL620KW6

CVSA Code
4960.0

Contact information
3752-7500
info@deltaam.com.ar

deltaam.com.ar

Objective

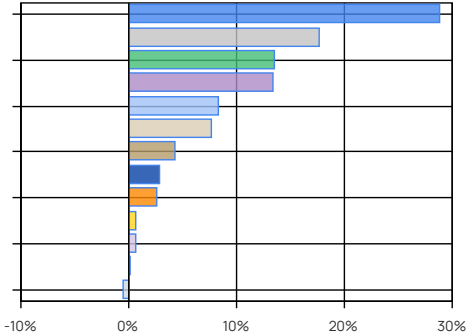
Delta Acciones' investment objective is to outperform its benchmark, the S&P Merval Index TR (ARS) (*). The fund's management style is active, based mainly on fundamental analysis through the study of critical variables of the companies' business models. In addition, we analyze the development of each company within the economic context, the competitive environment, operating performance and cash flow generation capacity. Qualitative, quantitative and technical analysis are also considered in our analysis. Redemption payment: up to 2 business days.

Performance	A Share Retail
Month	14.37%
Year to date	129.07%
Last year	129.07%
Last three years annualized	64.95%
Last five years annualized	41.59%

Share Evolution



Main Holdings



Main Holdings

Area / Asset Type	%	Amount
Oil & Gas	28.79	\$ 264,002,848
Banking and Financial Services	17.60	\$ 161,361,471
Steel industry and Mining	13.51	\$ 123,897,585
Utilities	13.41	\$ 122,918,092
Food and Agribusiness	8.37	\$ 76,781,562
Cash and Equivalents	7.66	\$ 70,265,476
Building	4.26	\$ 39,080,390
Consumer	2.83	\$ 25,985,726
Telecommunications	2.63	\$ 24,098,729
Government	0.67	\$ 6,098,920
Financial Trusts	0.63	\$ 5,738,103
Real Estate	0.12	\$ 1,112,251
Other Net Assets	-0.49	\$ -4,494,899
Total	99.99	\$ 916,846,252

Other Net Assets: net assets pending settlement
Cash and cash equivalents: includes cash, receivables, etc.

Historical performance

Year	Jan	Feb	Mar	Apr	May	Jun	Jul	Aug	Sep	Oct	Nov	Dec	Accum. Return
2022	8.15%	-1.74%	3.07%	0.43%	3.39%	-1.30%	30.12%	11.79%	0.93%	10.40%	10.08%	14.37%	129.07%
2021	-3.22%	0.77%	3.51%	8.67%	17.72%	3.31%	8.94%	8.67%	2.95%	10.37%	-3.41%	3.02%	78.57%
2020	-1.79%	-12.84%	-31.46%	38.06%	9.61%	-1.53%	24.59%	-3.99%	-11.26%	6.09%	17.53%	-5.17%	9.72%
2019	16.23%	-6.19%	-3.41%	-11.93%	12.99%	18.30%	1.48%	-37.83%	15.27%	18.91%	-2.58%	19.20%	24.51%
2018	12.16%	-3.88%	-3.98%	-2.69%	-2.24%	-8.22%	9.60%	1.95%	15.72%	-13.23%	7.34%	-6.46%	1.84%
Avg.	6.31%	-4.78%	-6.45%	6.51%	8.29%	2.12%	14.95%	-3.88%	4.72%	6.51%	5.79%	4.99%	

Corresponds to the share value evolution (Retail). Last 5 years.

Tax treatment. Retail: Exempt from income tax / debits and credits tax. Not exempt from Personal Assets tax. Redeems are taxable with income tax (except funds invested in shares). **Legal entity:** Exempt from debits and credits tax. Redeems are taxable with Income tax.