

September 2024

Fund type
Balanced - 100% Local

Fund information

Chief Investment Officer
Matías Cremaschi, CFA

Portfolio Managers
Rodrigo Corvalán
Pablo Escapa

Fund net assets
\$ 17,548,495,730

Fund Inception Date
Julio 2017

Subscriptions and Redemptions currency
Pesos

Redemption Payment Period
Up to 1 working day

Fund's Custodian
Banco de Valores S.A.

Management Fees
0.70% annual

Annual fees proportional to the period of stay

Custodian Fees
0.10% + yearly VAT

Entry and Exit load
None

Minimum investment
\$ 1,000.00

Rating
N/A

Bloomberg Code
DGEST7B AR

ISIN Code
ARBVAL6224H3

CVSA Code
24107.0

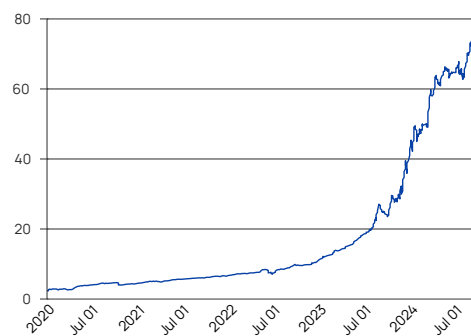
Contact information
info@deltaam.com.ar
deltaam.com.ar

Objective

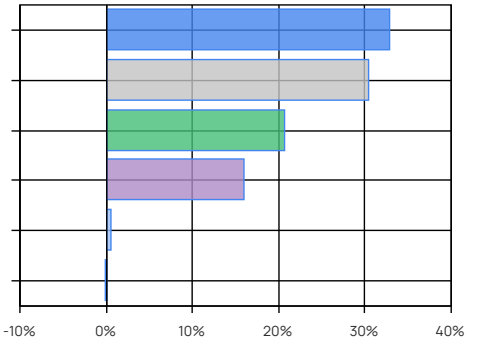
Delta Gestión VII is a balanced fund that seeks to obtain positive real returns in the medium/long term. The fund's portfolio is comprised of at least 75% of the best investment alternatives of peso-denominated bonds (including USD-Linked universe) and Argentine stocks, and the remaining 25% can be invested in global assets CEDEARs or USD Argentine bonds (both corporate and sovereign).

Performance	B Share Institutional
Month	-3.82%
Year to date	63.65%
Last year	195.12%
Last three years annualized	125.11%
Last five years annualized	118.60%

Share Evolution



Main Holdings



Main Holdings

Area / Asset Type	%	Amount
● Stocks	32.76	\$ 5,748,802,525
● ARS Sovereign Bills	30.36	\$ 5,327,937,650
● Inflation-Linked Sovereign Bonds	20.66	\$ 3,625,301,266
● CEDEARs	15.92	\$ 2,793,467,515
● Cash and Equivalents	0.44	\$ 76,757,570
● Other Net Assets*	-0.14	\$ -23,770,796
Total	100.00	\$ 17,548,495,730

Other Net Assets : includes assets pending liquidation, etc.
Cash and Equivalents: Includes cash, receivables, etc.

Historical performance

Year	Jan	Feb	Mar	Apr	May	Jun	Jul	Aug	Sep	Oct	Nov	Dec	Accum. Return
2024	8.50%	7.02%	16.81%	4.91%	7.36%	-0.92%	-0.91%	13.46%	-3.82%				63.65%
2023	9.58%	7.59%	5.45%	7.69%	9.92%	11.15%	9.19%	31.37%	-11.00%	15.78%	13.80%	36.87%	276.62%
2022	7.58%	1.27%	2.74%	0.83%	11.98%	-10.97%	13.22%	5.12%	8.07%	1.39%	3.02%	13.10%	70.96%
2021	7.10%	4.35%	-3.06%	7.69%	5.35%	1.48%	4.26%	2.93%	1.99%	3.64%	0.54%	3.89%	47.81%
2020	28.35%	-4.45%	-1.60%	36.53%	5.17%	3.69%	9.74%	1.58%	3.59%	-11.95%	4.73%	4.90%	100.70%
Avg.	12.22%	3.16%	4.07%	11.53%	7.96%	0.89%	7.10%	10.89%	-0.23%	2.22%	5.52%	14.69%	

Corresponds to the share value evolution (Institutional). Last 5 years.

Tax treatment. Retail: Exempt from income tax / debits and credits tax. Not exempt from Personal Assets tax. Redeems are taxable with Income tax (except funds invested in shares). Legal entity: Exempt from debits and credits tax. Redeems are taxable with Income tax.