

September 2024

Fund type
Equities - ARG Incorporated

Fund information

Chief Investment Officer
Matias Cremaschi, CFA

Portfolio Managers
Pablo Escapa

Fund net assets
\$ 43,121,901,340

Fund Inception Date
October 2016

Subscriptions and Redemptions currency
Pesos

Redemption Payment Period
Up to 1 working day

Fund's Custodian
Banco de Valores S.A.

Management Fees
3.90% annual

Annual fees proportional to the period of stay

Custodian Fees
0.10% + yearly VAT

Entry and Exit load
None

Minimum investment
\$ 1,000.00

Rating
AAc(arg)

Bloomberg Code
RJDAC3A AR

ISIN Code
ARBVAL620KZ9

CVSA Code
4974.0

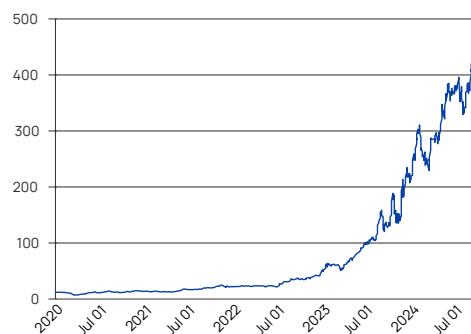
Contact information
info@deltaam.com.ar
deltaam.com.ar

Objective

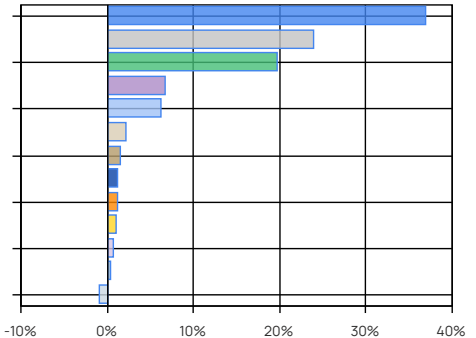
Delta Select invests in equity of Argentine companies, seeking to achieve returns above its reference index, the S&P Merval Index TR (ARS). The management is active, based mainly in the fundamental analysis through the study of critical variables of the Companies business models. Qualitative, quantitative and technical analysis are also considered.

Performance	A Share Retail
Month	-1.86%
Year to date	78.88%
Last year	198.36%
Last three years annualized	169.17%
Last five years annualized	115.02%

Share Evolution



Main Holdings



Main Holdings

Area / Asset Type	%	Amount
Banks and Financial Services	36.80	\$ 15,869,849,095
Oil & Gas	23.86	\$ 10,289,068,860
Utilities	19.66	\$ 8,478,883,525
Steel and Mining Industry	6.64	\$ 2,862,214,083
Cash and Equivalents	6.19	\$ 2,669,528,146
Building	2.12	\$ 914,699,681
Telecommunications	1.42	\$ 613,402,395
Food and Agribusiness	1.19	\$ 513,258,438
Real Estate	1.11	\$ 478,724,215
Industry	1.00	\$ 430,802,785
Technology	0.57	\$ 243,663,419
Consumer	0.34	\$ 147,329,979
Other Net Assets	-0.90	\$ -389,523,281
Total	100.00	\$ 43,121,901,340

Other Net Assets : includes assets pending liquidation, etc.

Cash and Equivalents: Includes cash, receivables, etc.

Historical performance

Year	Jan	Feb	Mar	Apr	May	Jun	Jul	Aug	Sep	Oct	Nov	Dec	Accum. Return
2024	35.07%	-18.76%	18.07%	8.97%	23.86%	-2.50%	-6.31%	14.11%	-1.86%				78.88%
2023	23.63%	-3.28%	-0.60%	21.08%	15.25%	20.09%	6.73%	42.51%	-13.19%	2.63%	39.17%	16.78%	338.61%
2022	8.04%	-2.91%	1.35%	-2.05%	3.71%	-3.51%	36.67%	9.73%	2.10%	7.76%	11.92%	18.84%	128.69%
2021	-5.35%	-0.37%	-1.69%	2.36%	18.46%	4.55%	6.28%	15.10%	1.89%	7.44%	-4.64%	6.10%	59.23%
2020	-4.11%	-13.17%	-29.59%	34.40%	13.99%	-0.40%	24.04%	-3.67%	-11.29%	9.48%	18.07%	-5.98%	15.25%
Avg.	11.45%	-7.70%	-2.49%	12.95%	15.05%	3.65%	13.48%	15.55%	-4.47%	6.83%	16.13%	8.93%	

Corresponds to the share value evolution (Retail). Last 5 years.

Tax treatment. Retail: Exempt from income tax / debits and credits tax. Not exempt from Personal Assets tax. Redeems are taxable with Income tax (except funds invested in shares). **Legal entity:** Exempt from debits and credits tax. Redeems are taxable with Income tax.