

May 2025

Fund type
Balanced - 100% Local

Fund information

Chief Investment Officer
Matías Cremaschi, CFA

Portfolio Managers
Rodrigo Corvalán
Pablo Escapa

Fund net assets \$ 35,777,904,002
Fund Inception Date Agosto 2010
Subscriptions and Redemptions currency Pesos
Redemption Payment Period Up to 1 working day
Fund's Custodian Banco de Valores S.A.
Management Fees 2.50% annual Annual fees proportional to the period of stay
Custodian Fees 0.075% + yearly VAT
Entry and Exit load None
Minimum investment \$ 1,000.00
Rating AA-c(arg)
Bloomberg Code RJMULIA AR
ISIN Code ARBVAL620L38
CVSA Code 4978.0

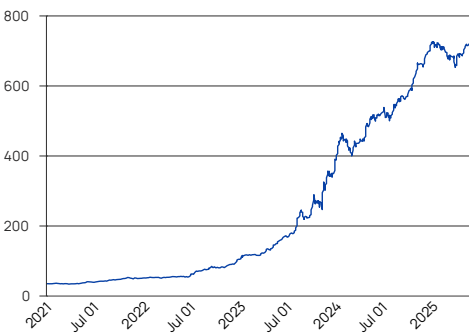
Contact information info@deltaam.com.ar deltaam.com.ar
--

Objective

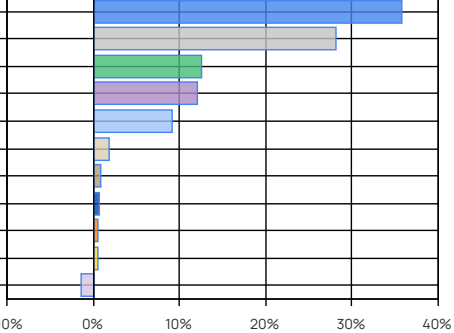
Delta Multimercado I es un fondo de renta mixta que busca ser una alternativa para aquellos inversores que deseen delegar la gestión del timing de inversión entre activos de renta fija y renta variable. La cartera del fondo está compuesta al menos un 75% entre las mejores alternativas de inversión de las curvas de bonos en pesos (incluye universo dólar-linked) y acciones argentinas, pudiendo invertir el 25% restante en bonos argentinos (tanto soberanos como corporativos) en dólares.

Performance	A Share Retail
Month	4.82%
Year to date	3.13%
Last year	39.48%
Last three years annualized	134.68%
Last five years annualized	93.17%

Share Evolution



Main Holdings



Main Holdings

Area / Asset Type	%	Amount
ARS Sovereign Bills	35.69	\$ 12,769,755,407
ARS Fixed Sovereign Bonds	28.02	\$ 10,024,961,481
Stocks	12.49	\$ 4,469,692,749
Inflation-Linked Sovereign Bonds	12.01	\$ 4,295,845,466
Dual (Fixed/TAMAR) Sovereign Bonds	9.14	\$ 3,270,000,000
ARS Inflation-Linked Subsovereign Bonds	1.72	\$ 616,102,500
USD Corporate Bonds	0.74	\$ 265,218,914
Cash and Equivalents	0.59	\$ 211,524,952
USD-Linked Corporate Bonds	0.55	\$ 197,475,553
ABS	0.49	\$ 174,219,413
Other Net Assets*	-1.44	\$ -516,892,432
Total	100.00	\$ 35,777,904,002

Other Net Assets : includes assets pending liquidation, etc.
Cash and Equivalents: Includes cash, receivables, etc.
The fund has Rofex dollar futures sold

Historical performance

Year	Jan	Feb	Mar	Apr	May	Jun	Jul	Aug	Sep	Oct	Nov	Dec	Accum. Return
2025	3.13%	-3.67%	-2.21%	1.26%	4.82%								3.13%
2024	29.37%	-7.69%	4.77%	5.66%	12.08%	0.66%	-0.99%	7.88%	1.10%	8.34%	8.84%	5.53%	100.40%
2023	13.88%	1.07%	2.35%	9.42%	14.17%	12.95%	5.99%	34.79%	-7.84%	18.59%	17.13%	11.89%	240.19%
2022	5.60%	-2.07%	0.50%	4.51%	1.14%	0.45%	28.37%	4.22%	9.41%	1.22%	8.30%	14.04%	101.94%
2021	0.78%	-1.18%	-1.71%	3.29%	8.31%	1.62%	8.21%	8.26%	3.15%	6.23%	-1.95%	3.42%	44.85%
Avg.	10.55%	-2.71%	0.74%	4.83%	8.10%	3.92%	10.39%	13.79%	1.46%	8.59%	8.08%	8.72%	

Corresponds to the share value evolution (Retail). Last 5 years.

Tax treatment. Retail: Exempt from income tax / debits and credits tax. Not exempt from Personal Assets tax. Redeems are taxable with Income tax (except funds invested in shares). **Legal entity:** Exempt from debits and credits tax. Redeems are taxable with Income tax.