

# Delta Gestión VI

A share



November 2025

Fund type

Balanced - At least 75% local

## Fund information

Chief Investment Officer  
Matías Cremaschi, CFA

Portfolio Managers  
Rodrigo Corvalán  
Pablo Escapa

Fund net assets  
\$ 7,021,641,256

Fund Inception Date  
Febrero 2019

Subscriptions and Redemptions currency  
Pesos

Redemption Payment Period  
Up to 1 working day

Fund's Custodian  
Banco de Valores S.A.

Management Fees  
2.50% annual

Annual fees proportional to the period of  
stay

Custodian Fees  
0.075% + yearly VAT

Entry and Exit load  
None

Minimum investment  
\$ 1,000.00

Rating  
A+c(arg)

Bloomberg Code

ISIN Code  
ARBVAL6211Z2

CVSA Code  
14581.0

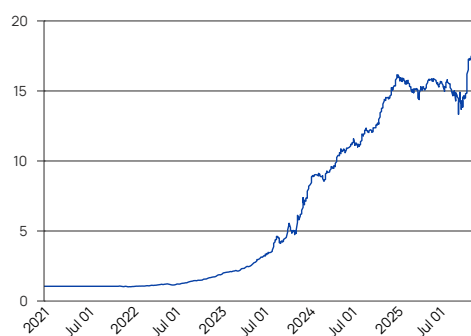
Contact information  
info@deltaam.com.ar  
deltaam.com.ar

## Objective

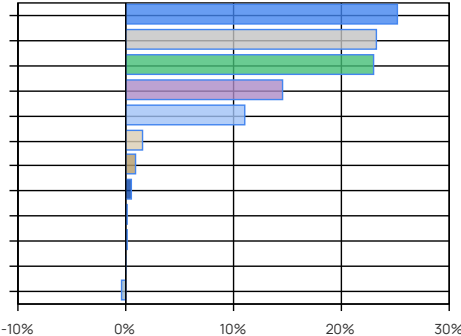
Delta Gestión VI is a balanced fund designed as an alternative for investors looking to delegate the timing decisions between fixed income and equity investments. The fund's portfolio allocates at least 75% to the best investment alternatives within peso-denominated bond curves (including the USD-linked universe) and Argentine equities, while the remaining 25% may be invested in CEDEARs of global assets or Argentine bonds (both sovereign and corporate) denominated in U.S. dollars.

Performance	A Share Retail
Month	1.85%
Year to date	14.42%
Last year	21.01%
Last three years annualized	117.13%
Last five years annualized	75.62%

## Share Evolution



## Main Holdings



## Main Holdings

Area / Asset Type	%	Amount
ARS Inflation-Linked Sovereign Bonds	25.17	\$ 1,767,675,714
ARS Fixed Sovereign Bonds	23.31	\$ 1,636,434,098
ARS Fixed Sovereign Bills	23.02	\$ 1,616,268,555
ARS Stocks	14.53	\$ 1,020,113,131
Dual (Fixed/TAMAR) Sovereign Bonds	10.99	\$ 771,960,000
Cash and Equivalents	1.61	\$ 112,966,711
CEDEARs	0.90	\$ 62,977,190
ARS Floating Rate ABS	0.54	\$ 38,019,144
Foreign NC	0.12	\$ 8,647,311
USD Corporate Bonds	0.08	\$ 5,655,373
USD Sovereign Bonds	0.06	\$ 4,173,153
Other Net Assets*	-0.33	\$ -23,249,123
Total	100.00	\$ 7,021,641,256

Other Net Assets : includes assets pending liquidation, etc.

Cash and Equivalents: Includes cash, receivables, etc.

## Historical performance

Year	Jan	Feb	Mar	Apr	May	Jun	Jul	Aug	Sep	Oct	Nov	Dec	Accum. Return
2025	3.84%	-3.98%	-1.72%	0.48%	4.95%	-3.76%	2.16%	-4.22%	-8.44%	26.08%	1.85%		14.42%
2024	21.22%	-0.54%	3.74%	8.39%	9.21%	2.09%	0.97%	9.32%	-1.32%	9.53%	9.67%	5.77%	109.16%
2023	9.24%	3.49%	6.07%	8.92%	11.97%	15.28%	8.25%	31.55%	-2.28%	10.02%	19.87%	25.99%	289.82%
2022	4.06%	0.94%	3.81%	6.24%	2.71%	-3.83%	9.57%	6.85%	7.44%	6.41%	9.57%	9.72%	84.13%
2021	0.00%	0.00%	0.00%	0.00%	0.00%	0.00%	0.00%	0.00%	0.00%	0.00%	-2.48%	-0.27%	-2.74%
Avg.	7.67%	-0.02%	2.38%	4.81%	5.77%	1.95%	4.19%	8.70%	-0.92%	10.41%	7.70%	10.30%	

Corresponds to the share value evolution (Retail). Last 5 years.

**Tax treatment.** Retail: Exempt from income tax / debits and credits tax. Not exempt from Personal Assets tax. Redeems are taxable with Income tax (except funds invested in shares). Legal entity: Exempt from debits and credits tax. Redeems are taxable with Income tax.